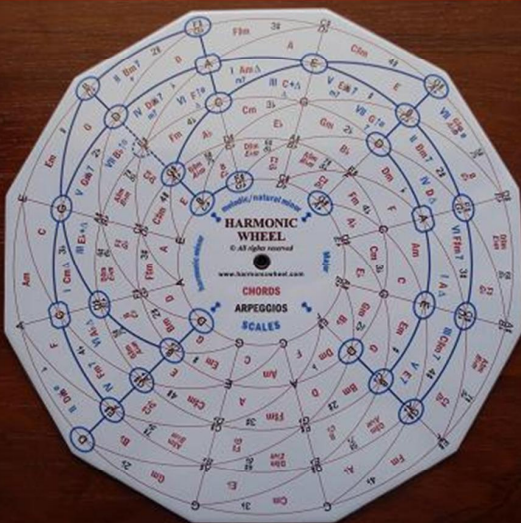


HARMONIC WHEEL

The new instrument of musicians



www.harmonicwheel.com

THE STRUCTURE OF MUSIC

MUSICAL NOTES

HARMONIZATION

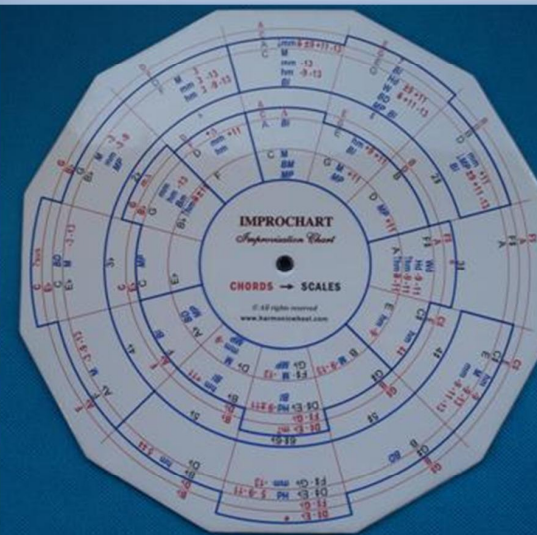
SCALES

CHORDS

IMPROVISATION

IMPROCHART

Improvisation Chart

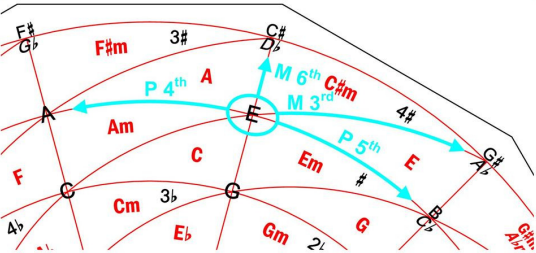


NEW CONCEPTS: MAP OF THE KEYS, CHORD FINDER, SCALE FINDER

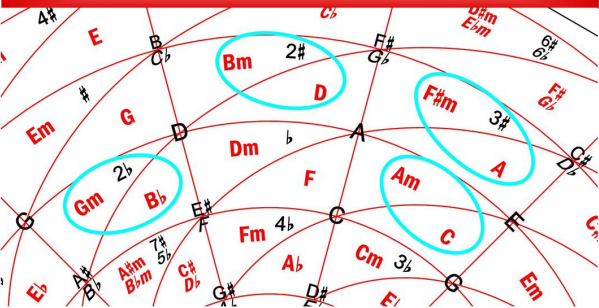
APPLICATIONS: MUSIC THEORY, HARMONY, IMPROVISATION, COMPOSITION

HARMONIC WHEEL

2 NOTE CONSONANCES: CONSONANT INTERVALS



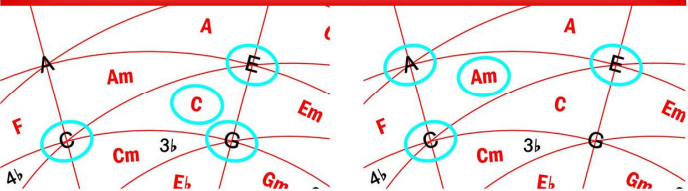
Keys and their Key Signatures



The Cycle of Fifths does not show the close relationship between C Major and C minor (Change of Mode), but the Map of the Keys does

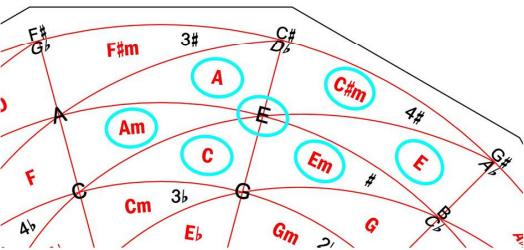
3 NOTE CONSONANCES: CONSONANT CHORDS

Consonant Chords and their Arpeggios

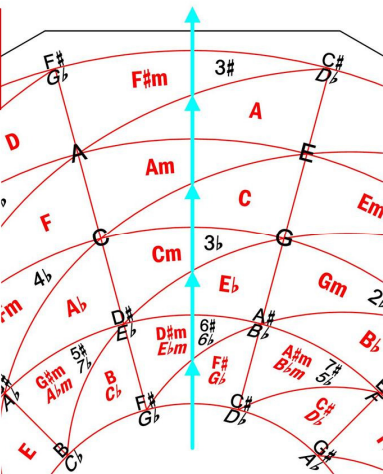
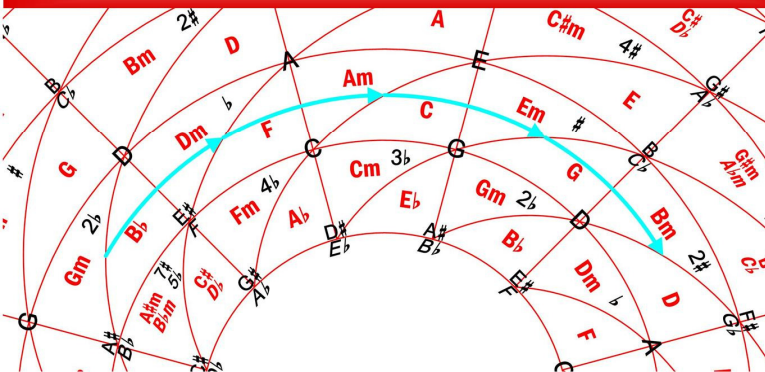


Black Colour: Musical Notes, Arpeggios
Red Colour: Consonant Chords and Keys

Consonant Chords containing the note E



MAP OF THE KEYS: Cycle of Fifths + Changes of Mode

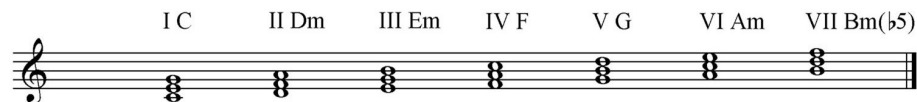


HARMONIZATION: Given a Melody, to add it Chords.
The most used Chords are those composed by the notes of the Scale in which the melody is written

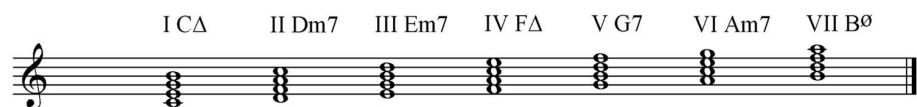
C Major Scale



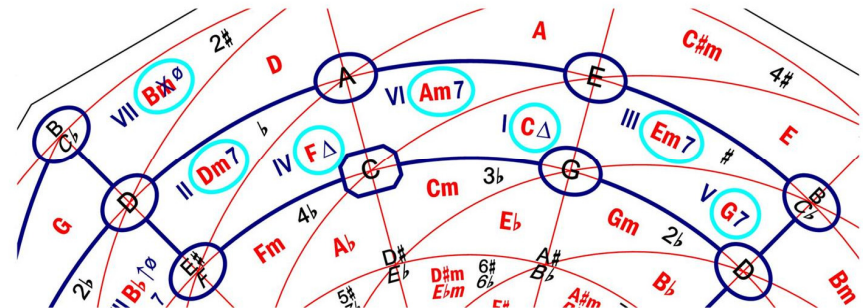
3 Note Chords in C Major



4 Note Chords in C Major



CHORD FINDER:
Obtaining the Chords associated to a given Scale



IMPROCHART

IMPROVISATION: Given a Chord Progression, to add it a Melody.

For improvising on a chord, the most used Scales are those containing the notes of the Chord

C Major

G Major

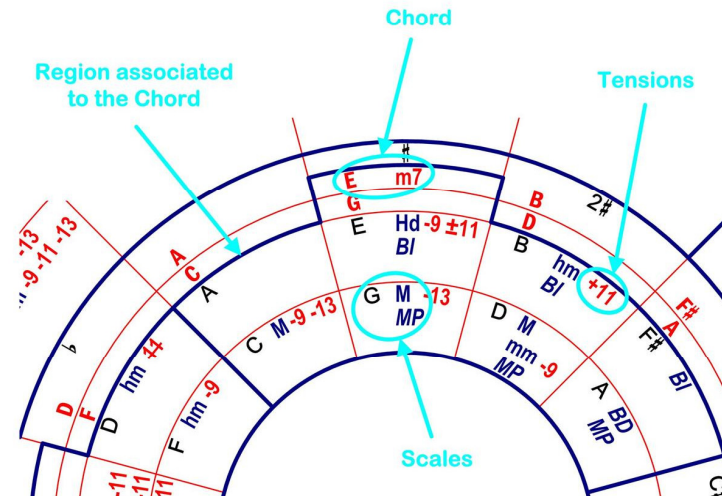
D Major

B harmonic minor

D melodic minor

Em7 chord = E, G, B, D

SCALE FINDER:
Obtaining the Scales associated to a given Chord



Copyright © 2008 Luis Nuño
www.harmonicwheel.com