

# THE STRUCTURE OF MUSIC

## HARMONICS

### CONSONANCES - MUSICAL NOTES

#### HORIZONTAL STRUCTURE

#### MELODY

#### SCALES

HARMONIZATION: Given a  
Melody, to add it Chords

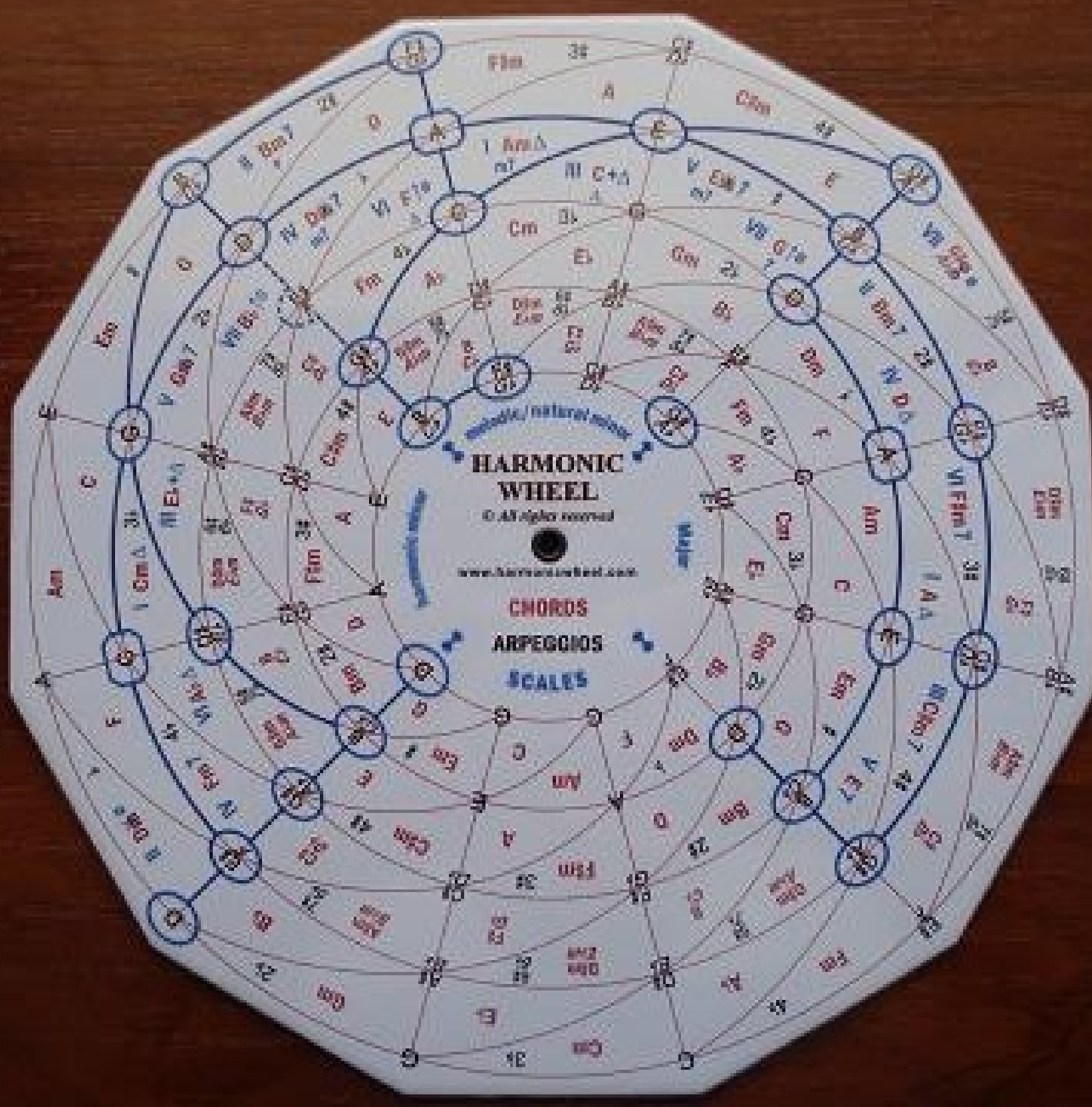
#### CHORDS

#### VERTICAL STRUCTURE

#### HARMONY

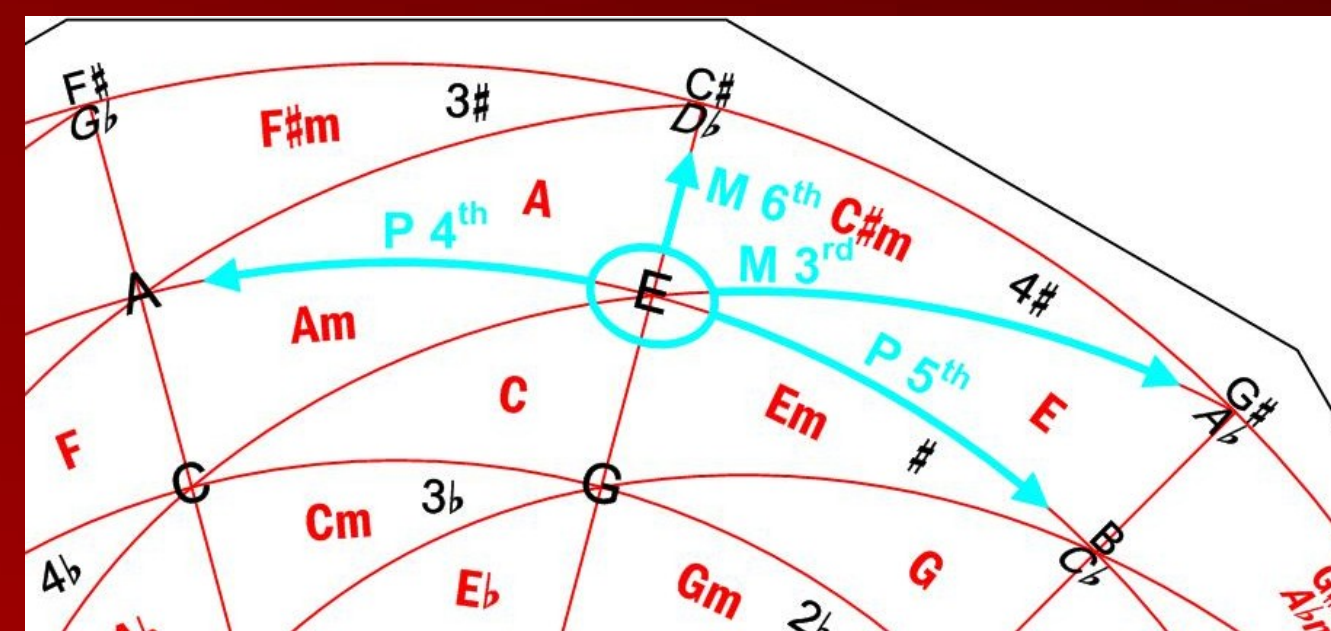
IMPROVISATION: Given a Chord  
Progression, to add it a Melody

## HARMONIC WHEEL

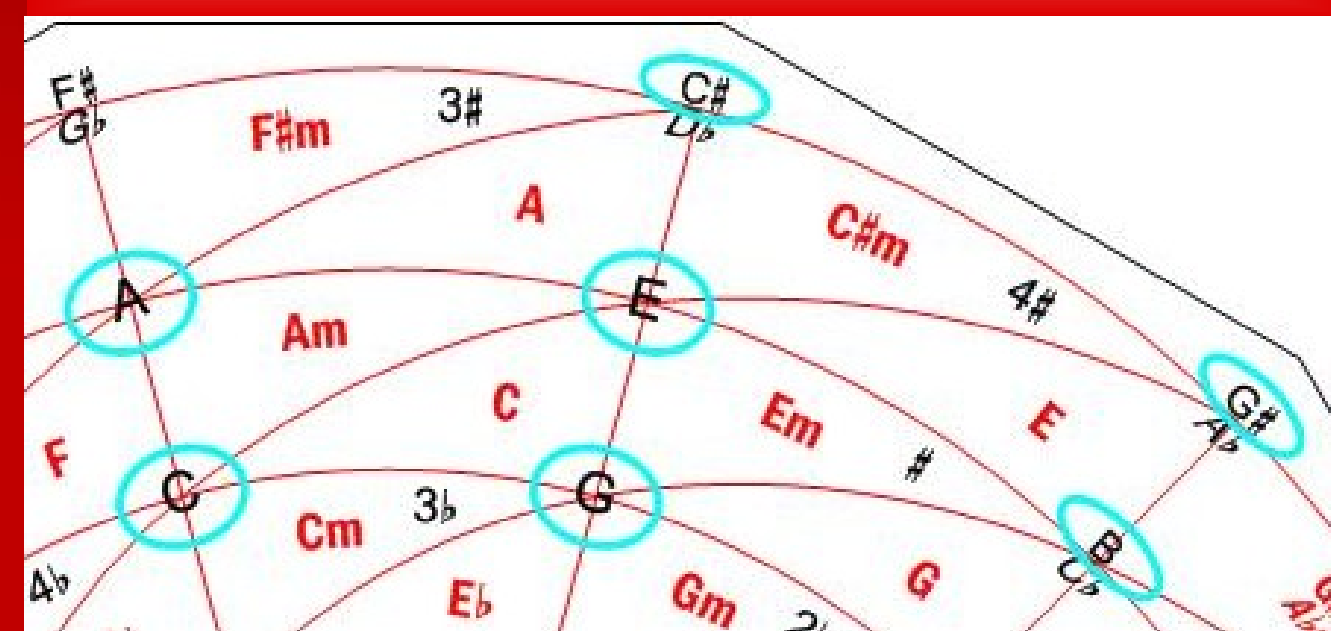


Black Colour: Musical Notes, Arpeggios  
Red Colour: Consonant Chords and Keys

### 2 NOTE CONSONANCES: CONSONANT INTERVALS

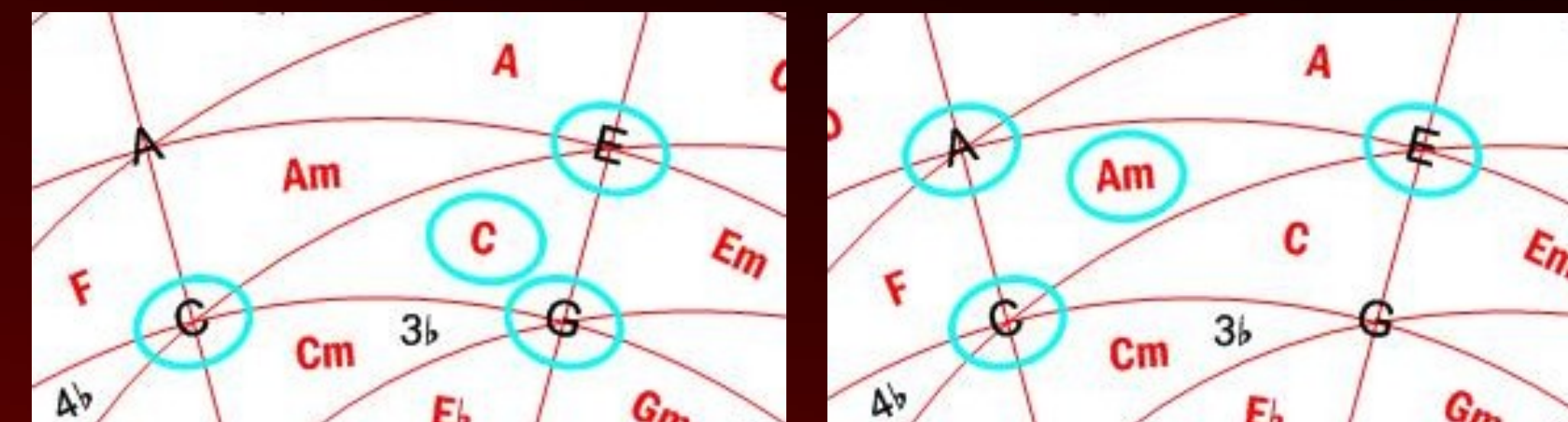


### Notes forming Consonant Intervals with note E

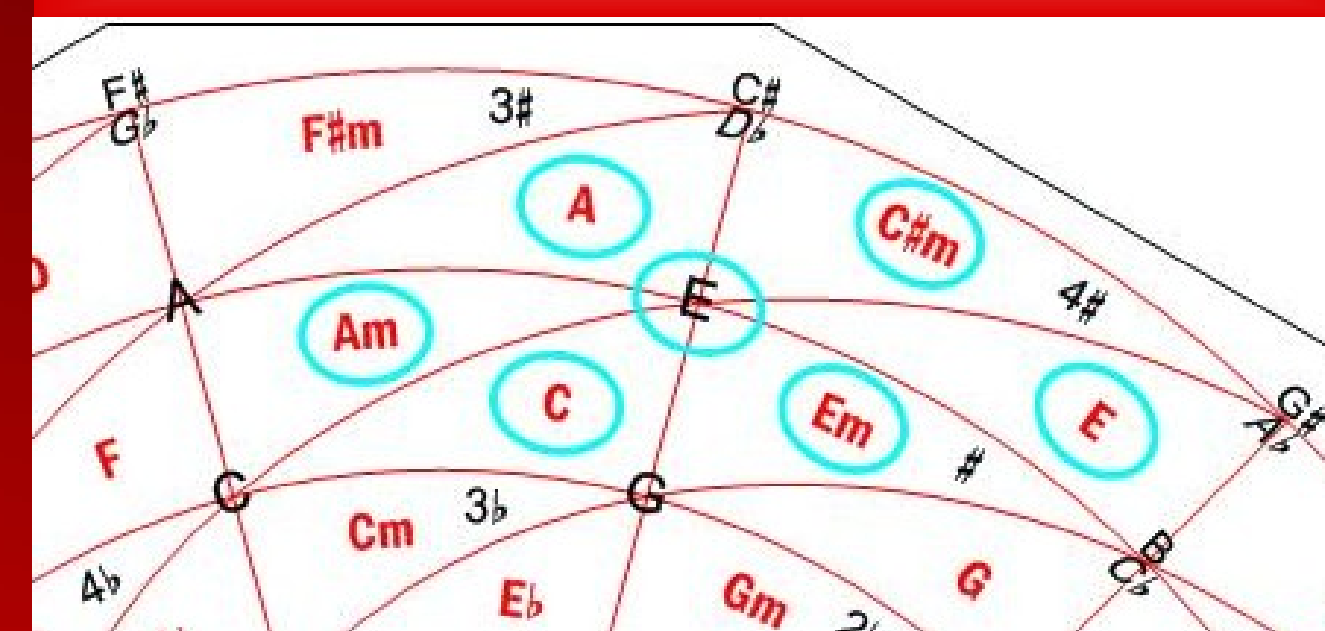


### 3 NOTE CONSONANCES: CONSONANT CHORDS

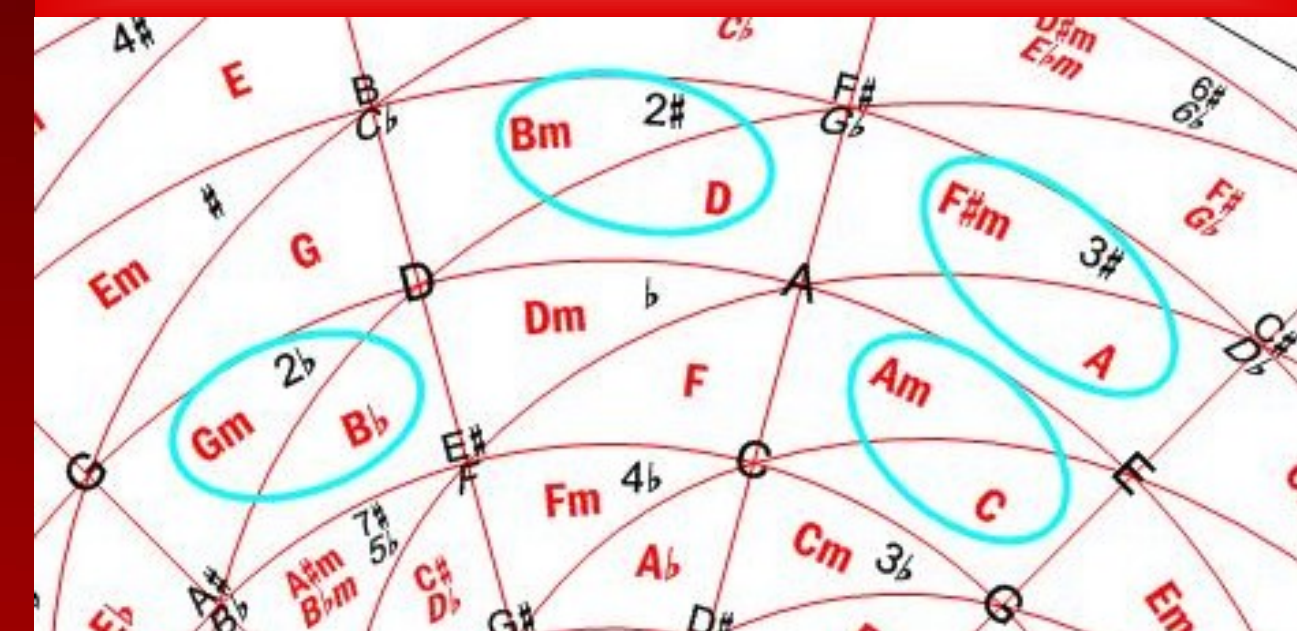
#### Consonant Chords and their Arpeggios



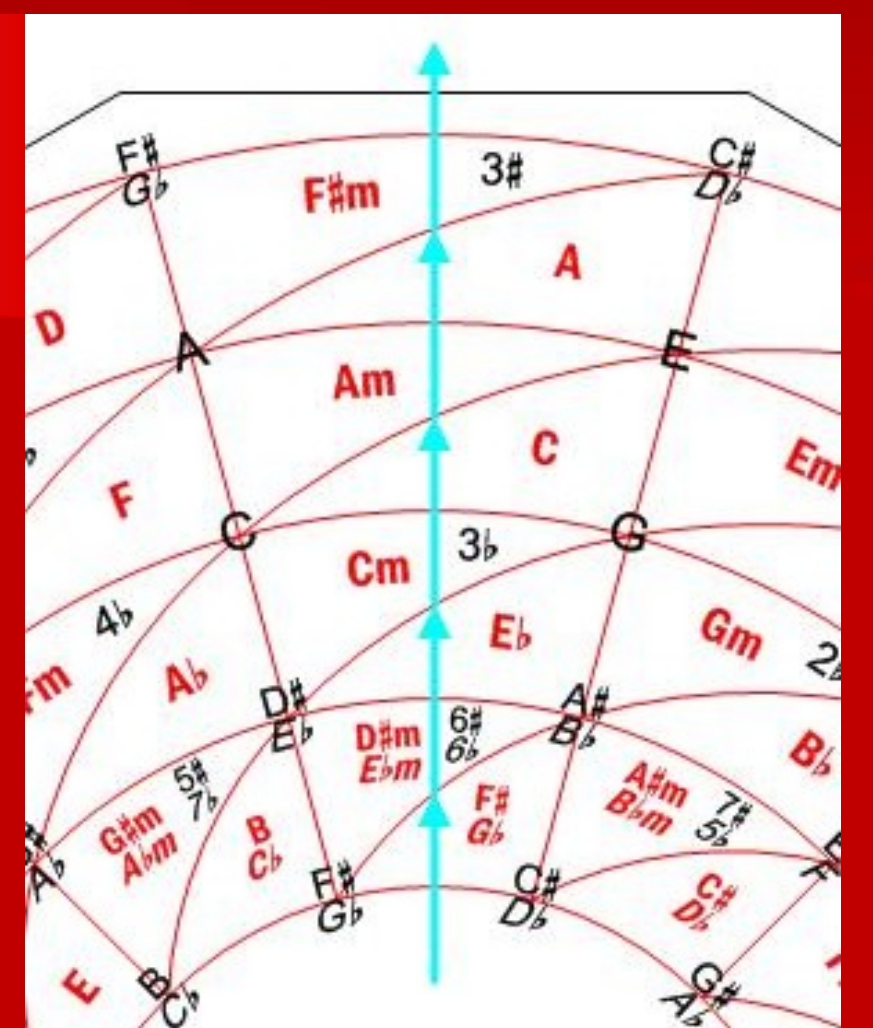
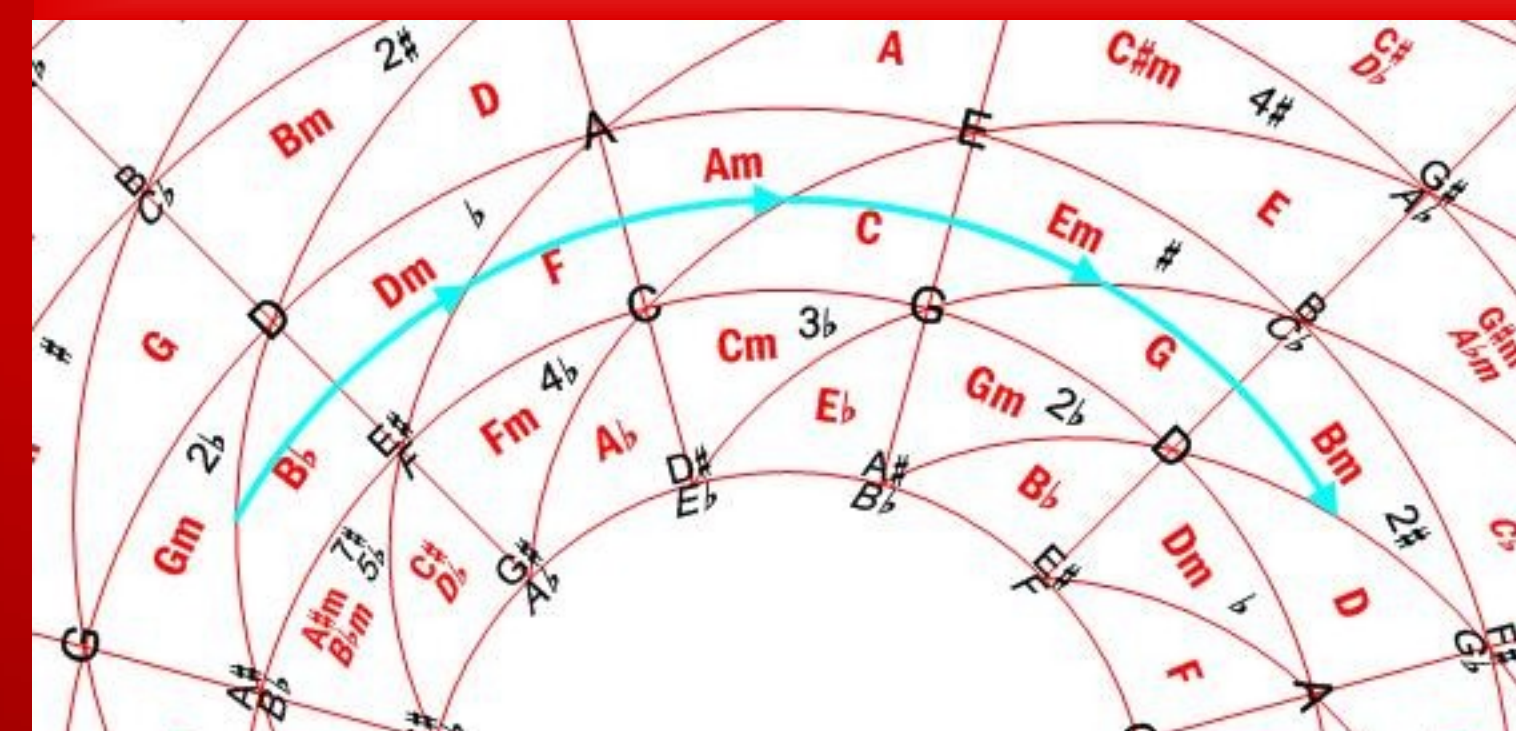
#### Consonant Chords containing the note E



#### Keys and their Key Signatures



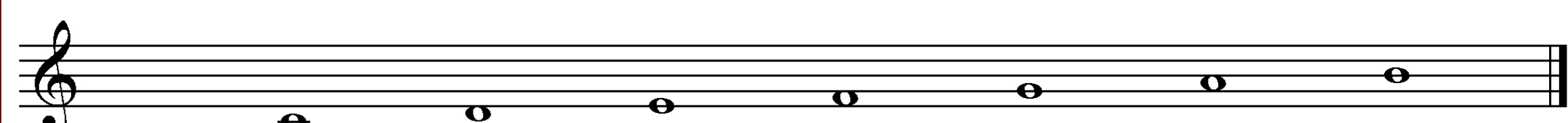
### MAP OF THE KEYS: Cycle of Fifths + Changes of Mode



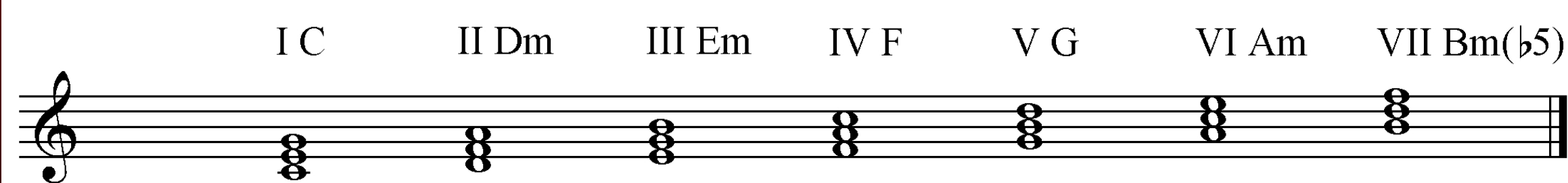
### HARMONIZING A MELODY:

The most used Chords are those composed by the  
notes of the Scale in which the melody is written

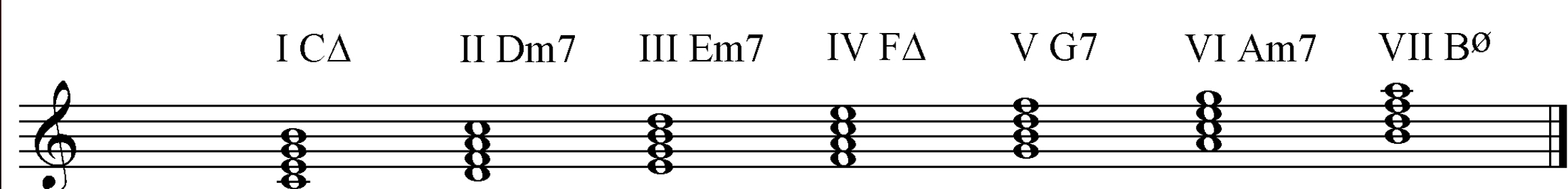
C Major Scale



3 Note Chords in C Major

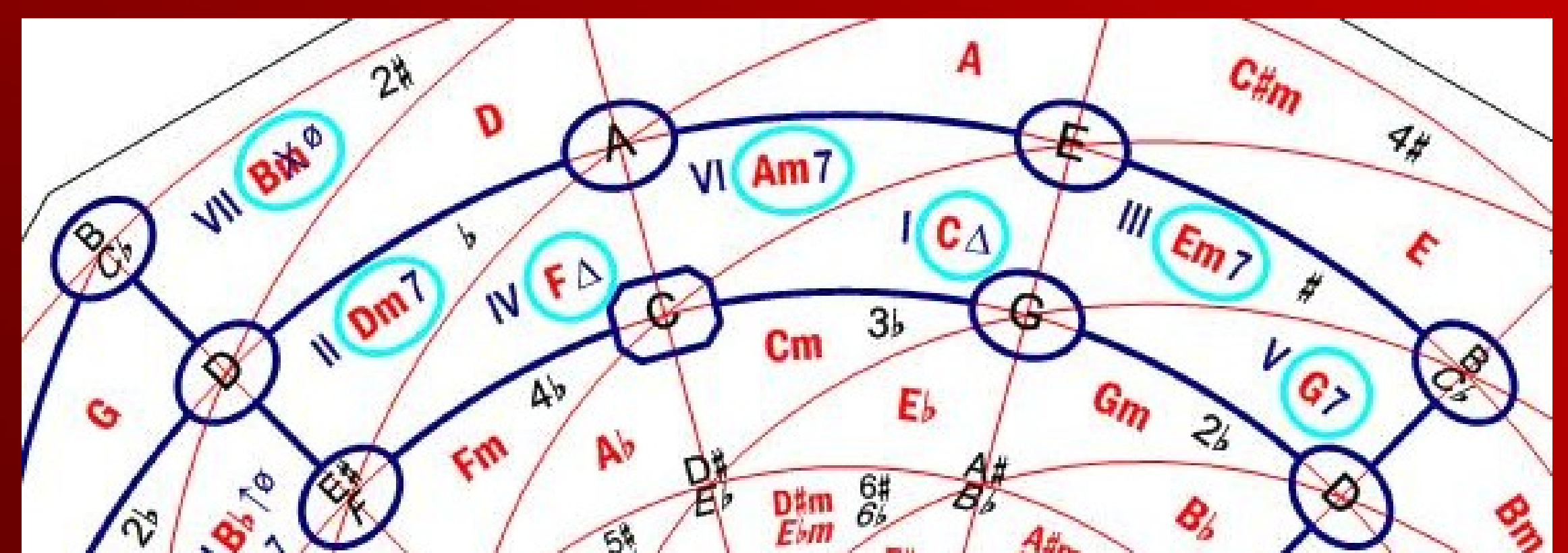


4 Note Chords in C Major



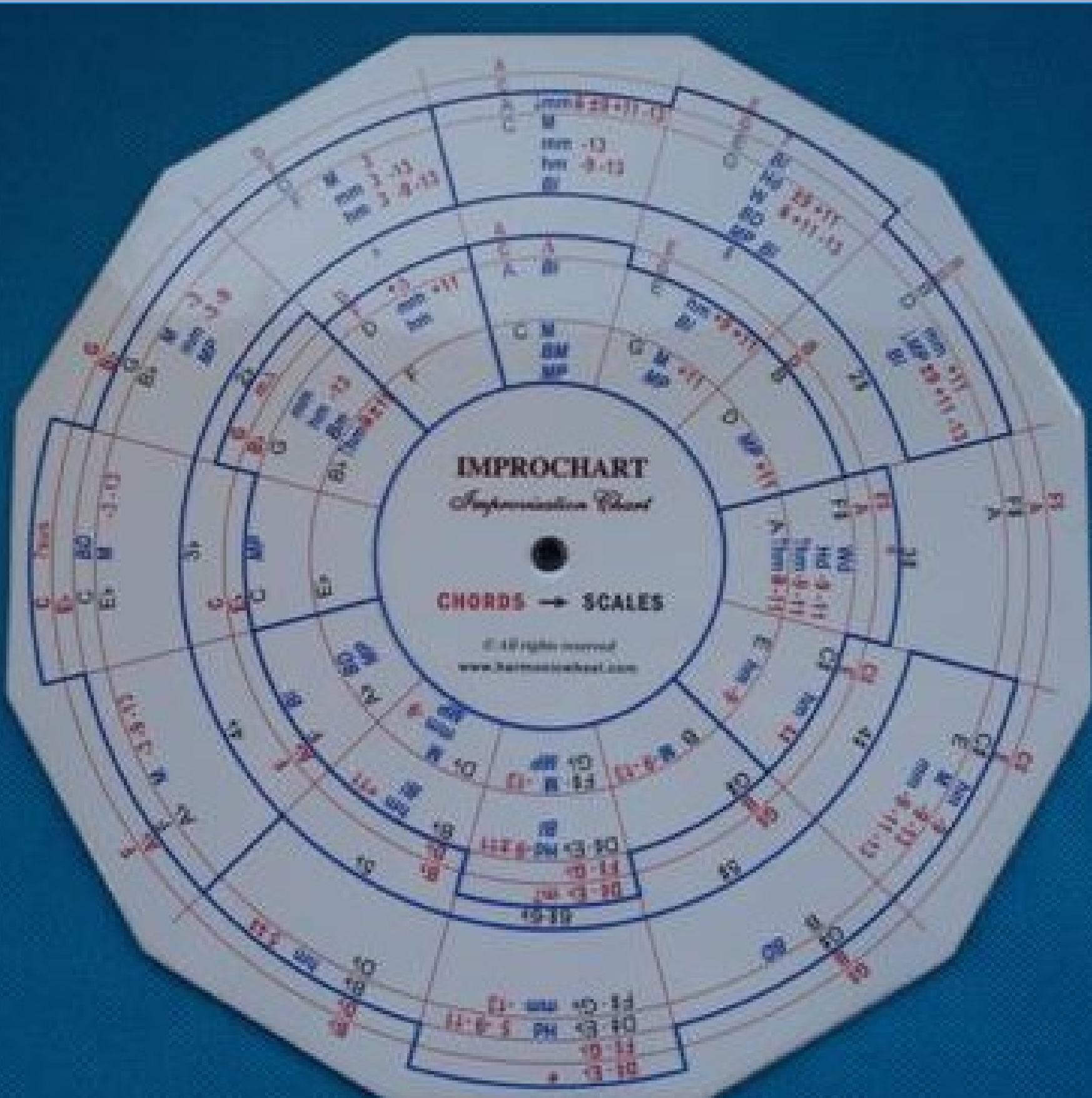
### CHORD FINDER:

Obtaining the Chords associated to a given Scale



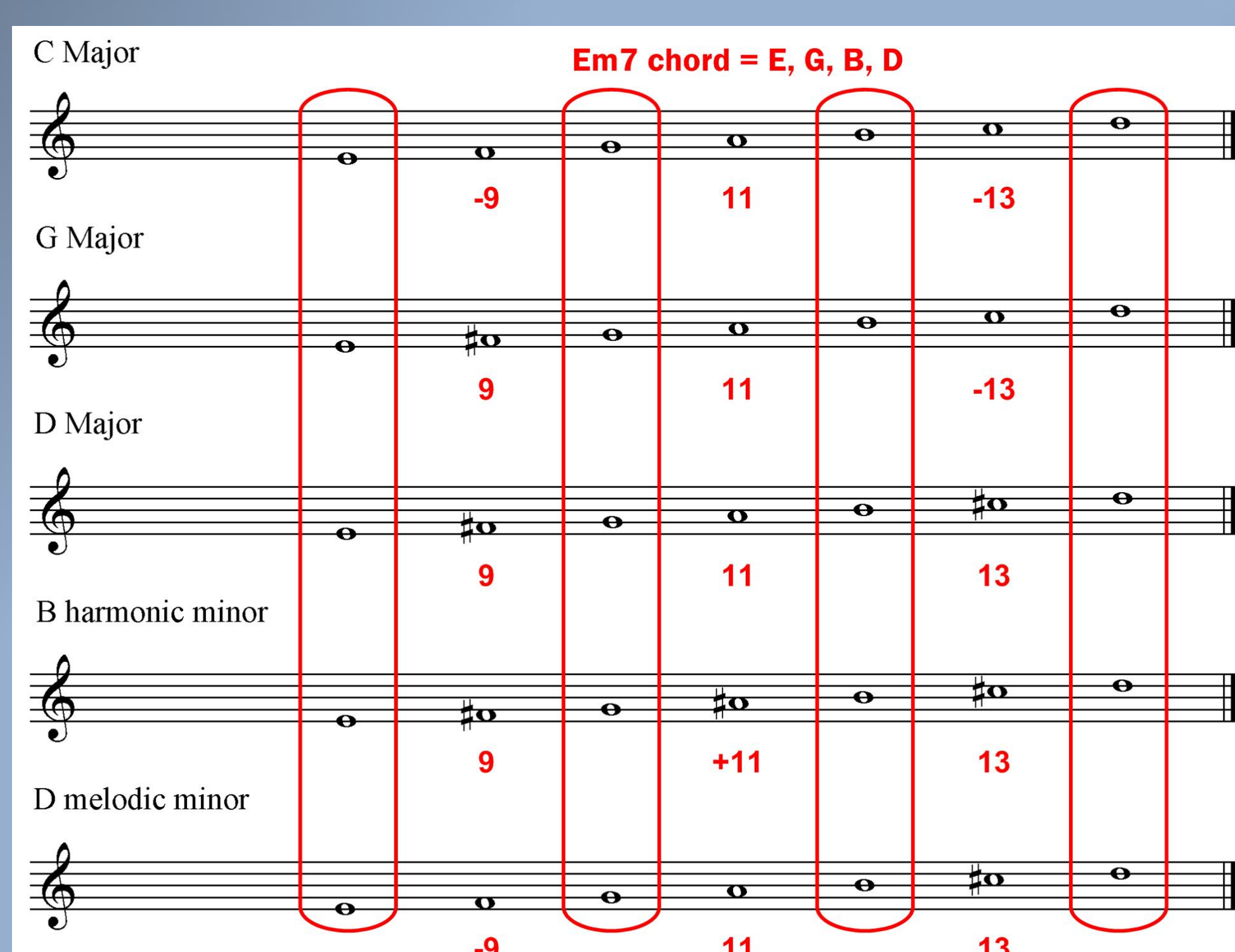
## IMPROCHART

*Improvisation Chart*



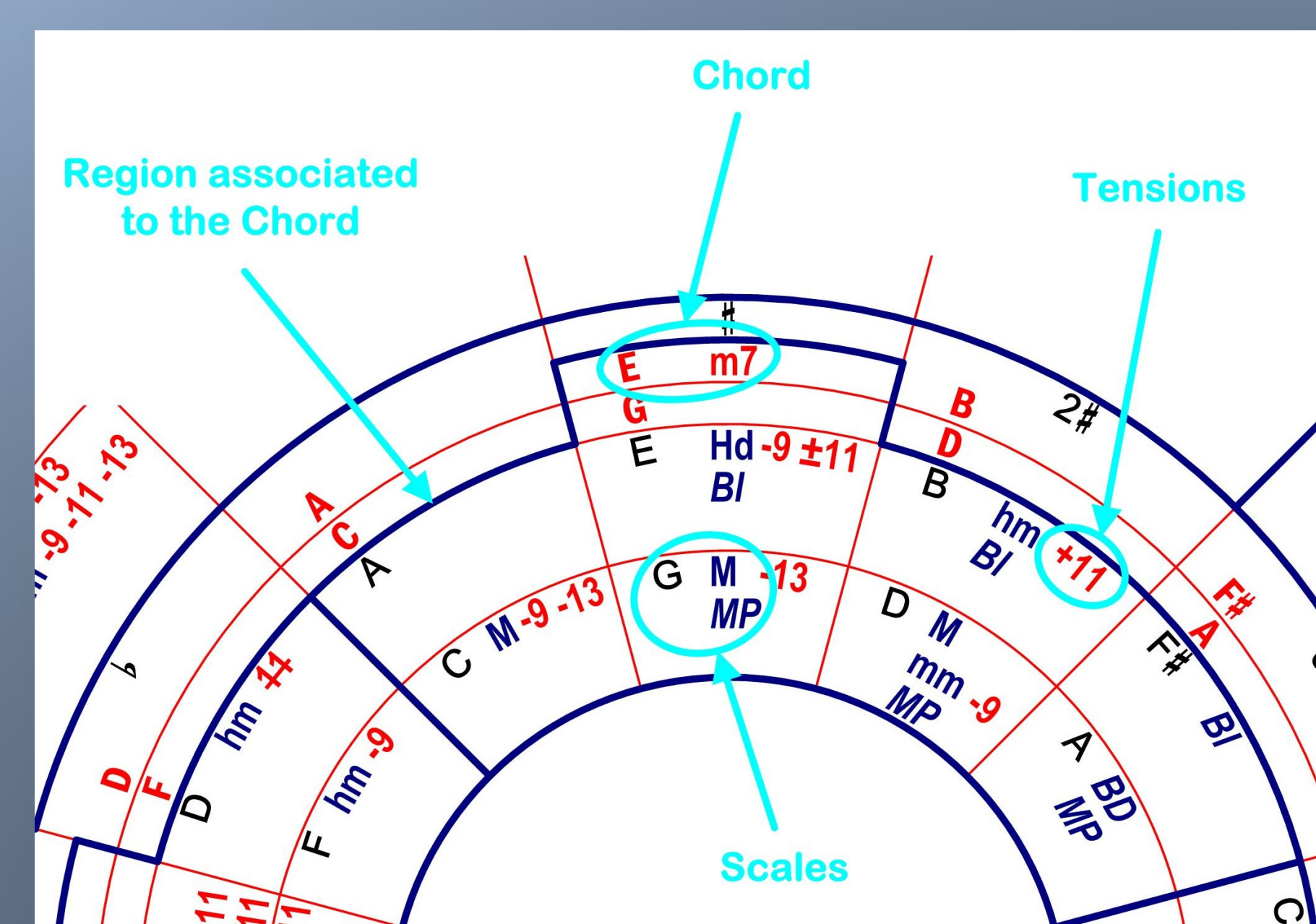
### IMPROVISING ON A CHORD:

The most used Scales are those  
containing the notes of the Chord



### SCALE FINDER:

Obtaining the Scales  
associated to a given Chord



Copyright © 2008 Luis Nuño  
www.harmonicwheel.com